

Call to Artists: Project Background



About the Jackson Hole Children's Museum

Through safe and welcoming play spaces, after-school programs, summer camps, and partnerships with community nonprofits, our museum is more than just a place – *it's the heart of a community where relationships are essential for the well-being of children and families.* By turning science into exciting experiments, art into expressions of curiosity and joy, and imagination into reality, we give every child the opportunity to be themselves, bring their unique possibilities to life, and realize their full potential.

Mission:

To ignite every kid's potential through creativity, learning, and play.

Vision:

A community where the magic of learning and play lives everywhere, for everyone.

Learning Strategies:

Build Relationships: Foster connections among children, caregivers, and educators.

Encourage Exploration: Inspire kids to try new things.

Celebrate Creativity: Promote imagination through playful learning.

Interdisciplinary Programs: Integrate various subjects for a holistic approach.

Top-Notch Visitor Experience: Ensure every visit is engaging and memorable.

Program Pillars:

Inquiry-Based Learning: Promote curiosity across disciplines.

Sensory Learning: Engage kids with hands-on experiences.

Social-Emotional Growth: Focus on interpersonal skills.

Family Bonding: Strengthen parent-child relationships.

Empowerment: Encourage kids to see themselves as change-makers.

Museum & Exhibit Spaces:

Versatile Spaces: Versatile exhibit, programming & event spaces.

STEM Areas: Focus on science, technology, engineering, & math.

Role Play Zones: Inspire imaginative play.

Active Play Areas: Promote physical activity.

Innovation Corners: Encourage problem-solving.

Collaborative Play: Foster child-caregiver interactions.

Adult Connections: Facilitate community building among adults.

Collaborators:

Gyroscope Inc., GYDE Architects, Skyhouse Studios, Big-D Construction, The Igneous Factory



Want to learn more about JHCM?

Call to Artists: Exhibit Design Process

Want to bring your creativity to life at the Jackson Hole Children's Museum?

Email jb@gydearchitects.com by October 18th with your **Submission of Interest**. Please include the following:

- Your name and medium(s)
- The exhibit(s) you're excited about and why
- Visual samples of your work

Both teams and individuals are encouraged to submit interest on all exhibits!

What happens if you're selected to develop a concept proposal?

JHCM and GYDE Architects may contact artists to develop a concept proposal. If a concept proposal is requested, a \$1,000 stipend will be provided. JHCM and GYDE Architects are currently looking for concept proposals for the following exhibits but strongly encourage artists to also contact us with ideas for other exhibits:

- Reception desk
- Elements in the Wilderness Climber
- Fantastic Forest
- Hole Story

Concept Proposals should:

- Be creative in ideas, materials, and fabrication
- Align with the museum's mission and program pillars, including STEAM
- Connect to the spirit of Jackson, Wyoming
- Provide a tentative schedule and budget for design and fabrication

Drawings, sketches, models and more are all encouraged!

What happens after the concept proposal?

JHCM and GYDE Architects will review concepts and choose artists and teams to develop and fabricate the exhibits! This will be a collaborative process working with museum staff and educators to fully develop the exhibits and ensure engagement, functionality and integration of STEAM principles. Contracts and payment terms for winning concepts will be determined in January 2025.

Project Timeline

September 25:	Artist & Craftsperson Lunch
October 18:	Submissions of Interest due
October 21- November 1:	Artists contacted for questions and follow-up
November 4-7:	Concept RFPs awarded
December 1:	Concepts due
January 2025:	Concepts chosen for development and fabrication in collaboration with the JHCM team
February - May 2025:	Project Check-ins on design development, prototypes, and fabrication
May 2025:	Installation
June 2025:	Museum Opening

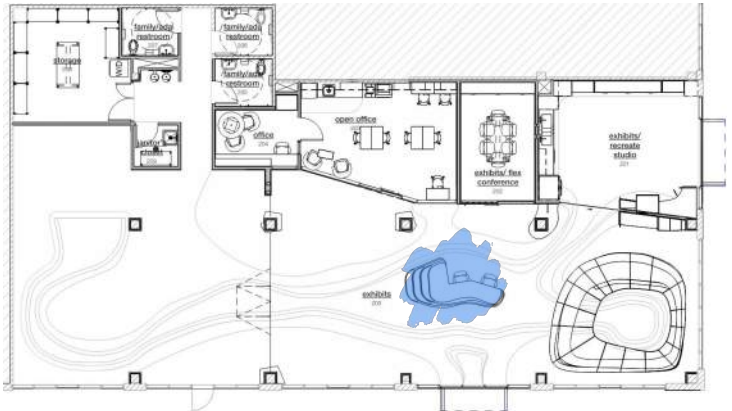


*Questions?
Interested in making an exhibit?
Email the team!*



Request for Proposal: Welcome Desk

Jackson Hole Children's Museum
105 Mercill Avenue



Request for Proposal: Welcome Desk

Budget: \$xxx inclusive of materials, fabrication, & fees

Appx. Overall Size: 13' L x 6'-6" D x 2'-6" H

Key Concepts:

- Welcoming
- Sense of Home, Ease of Being
- Magical Realism

Components & Considerations:

- Cubbies to display items for sale
- Integrated Storage and Signage
 - Types of Signage - prefer analog over digital
 - 8.5x11 prints with plastic covers/displays
 - Railroad inspired flip screens
 - Plexi-etched light up
 - Signage needed
 - Museum Information
 - Calendar of the week, month
 - Membership & daily entry fees (Plexi?)
- Signage must meet the requirements of IBC 2021 Section 1112 and ICC A117.1
- Kid interaction incorporated into desk (i.e. ball run, cave, gears, etc.)
- Mobile
 - Casters, etc.
 - Could be designed in multiple pieces to become other objects or nest within itself
- Lighting - Chandelier or other lighting above? Integrated?
- Electrical and Data connections - current plans have connection at floor
- Relates to place and community and the vision of the Jackson Hole Children's Museum
- Natural materials and forms
- Whimsical, Magical, Imaginative, Joyful
- Inclusive and Additive

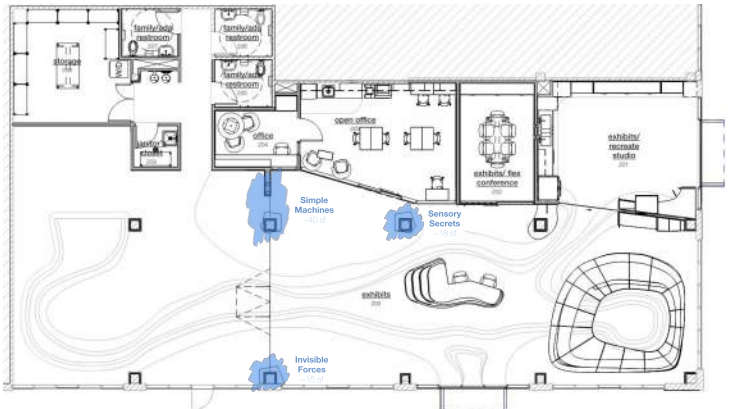
Potential Metaphors: boat, river rock, island, whale...

*Please note that materials and forms are at artist's discretion.
Drawings are shown for reference only and are not to scale.*

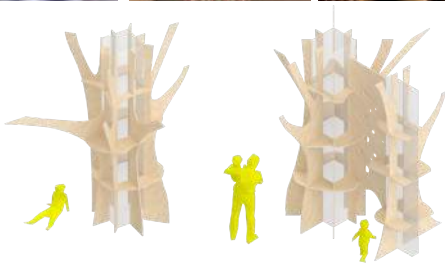


Request for Proposal: Fantastic Forest

Jackson Hole Children's Museum
105 Mercall Avenue



Request for Proposal: Fantastic Forest



Request for Proposal: Fantastic Forest

Budget: \$xxx inclusive of materials, fabrication, & fees

Appx. Overall Size:

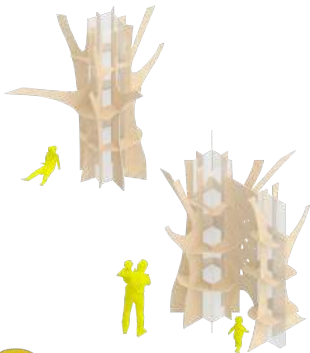
Simple Machines Tree - 4'-6" L x 9'-6" D x 12' H

Invisible Forces Tree - 4'-6" L x 3' D x 12' H

Simple Machines Tree - 4' L x 4'-6" D x 12' H

Key Concepts:

- *Simple Machines Tree*
 - Kinetic and Potential Energy
 - Gravity
 - Magnetism
- *Invisible Forces Tree*
 - Wind & Aerodynamics
 - Pressure
 - Sound & Waves
 - Visuals & Light
- *Sensory Secrets Tree*
 - Visual
 - Auditory
 - Tactile
 - Scent
 - Taste (?)
- Opportunity to collaborate with JHCM staff
- Durable
- Flexible & manipulative



Simple Machines Tree Components & Considerations:

- Ramp / Slide
- Brunelli Screw
- Magnet Wall (Chutes and Gullies)
- Pulleys
- Levers (Seesaw)
- Gears
- Secrets / Surprises
- Adjacent to magnetic table (consider integration)
- Ideas:
 - Hole at magnet wall that goes down a slide and reappears
 - Rocks, roots, and branches to form stepstools to climb to different heights to manipulate magnets, ball drops, gears, etc.
 - Buckets at tree canopy to drop apples / fruit on pulleys

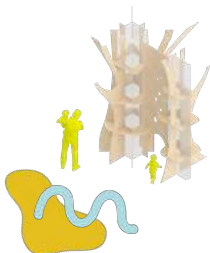
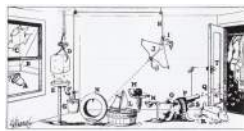
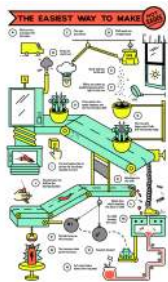
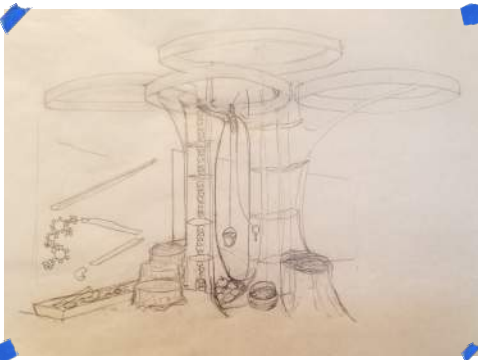
Invisible Forces Tree Components & Considerations:

- Wind cannon with multiple nozzles for manipulation
 - Consider acoustic dampening for motor operation
- Wind tubes / scarf cannon
 - Multiple objects for experimentation (balls, scarves, etc.)
- Shimmer wall with wind cannon
- Prisms in different shapes
- Science of light
- Secrets / Surprises
- Recycled / upcycled materials
- Adjacent to wind machine (consider integration)
- Ideas:
 - Balls and scarves come out of canopy
 - Scarf / tubes do not have to be integrated into the tree
 - Bird-in-cage spinners
 - Hanging vines
 - Whisper to another tree

Sensory Secrets Tree Components & Considerations:

- Texture - Must want to touch
- Bench / seating
- Phone
- Books
- Secrets / Surprises
- Hiding spot / nook
- Recycled / upcycled materials
- Ideas:
 - Phone inside nook with animal sounds, Shoshone words, or calls other trees
 - Spoons / everyday objects used in reclaimed ways hanging from ceiling or tree canopy
 - Painted swirls
 - Bird-in-cage spinner?

Request for Proposal: Fantastic Forest - Simple Machines



Request for Proposal: Fantastic Forest - Invisible Forces

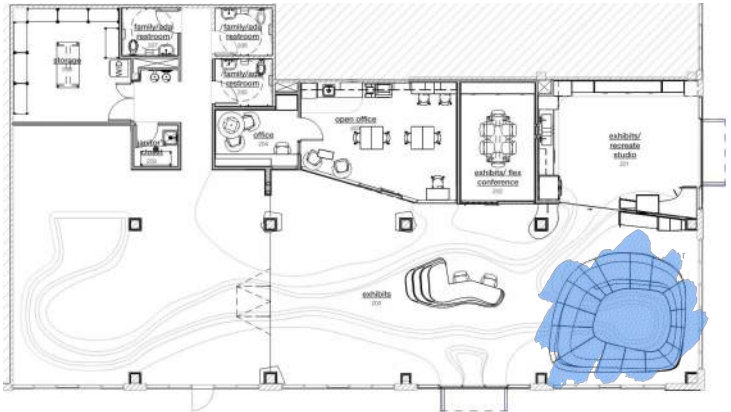


Request for Proposal: Fantastic Forest - Sensory Secrets



Request for Proposal: Hole Story

Jackson Hole Children's Museum
105 Mercill Avenue



Request for Proposal: Hole Story

Budget: \$xxx inclusive of materials, fabrication, & fees

Appx. Overall Size: 17'-6"L x 13'D x 11'H

Key Concepts:

- Motor skill & tactile development for small children
- Relates to rivers and Jackson
- Natural materials
- Playful
- Secrets
- Assemblage
- Layer with time, both by JHCM and children

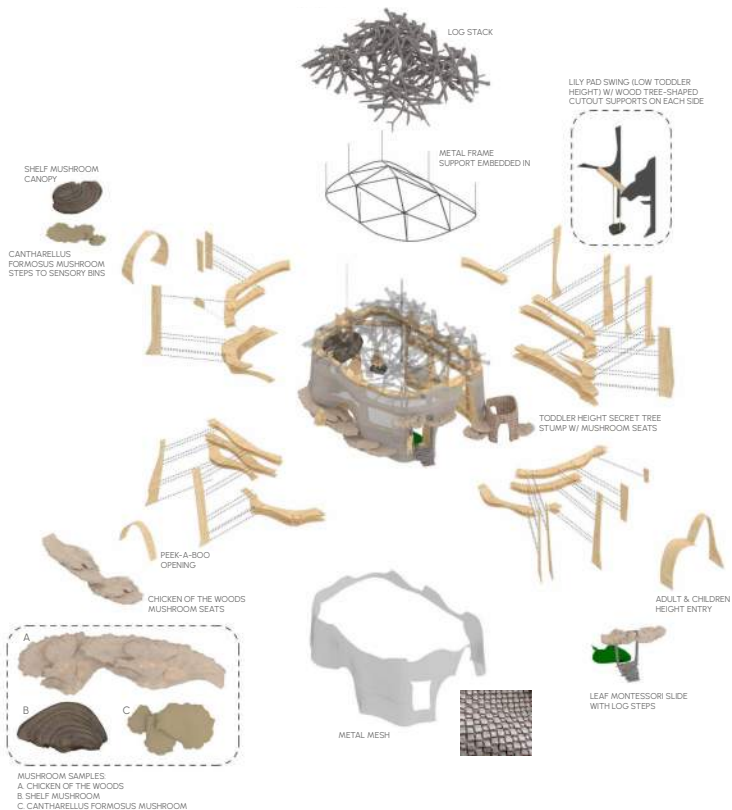
Components & Considerations:

- Primarily for ages 1-3
- Leaf slide with log steps
- Adult and children entry height
- Peek-a-boo
- Sensory bins
- My first swing
- Seating
- Lighting above - TBD
- Natural materials and forms
- Additive over time

Potential Metaphors: mushrooms, logs, lily pad, beaver dam, giant tree, nests



Request for Proposal: Hole Story

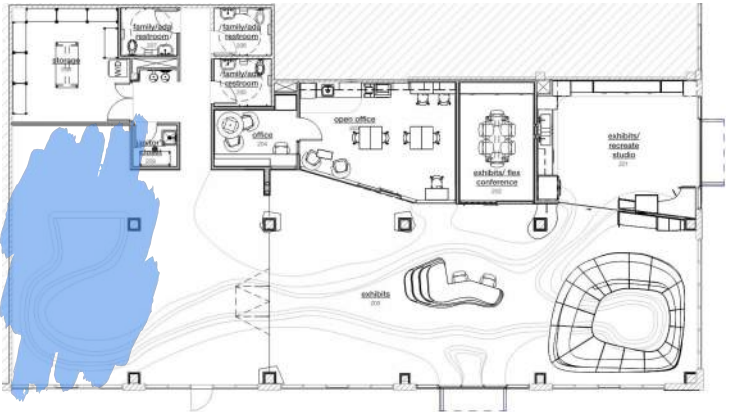


Request for Proposal: Hole Story

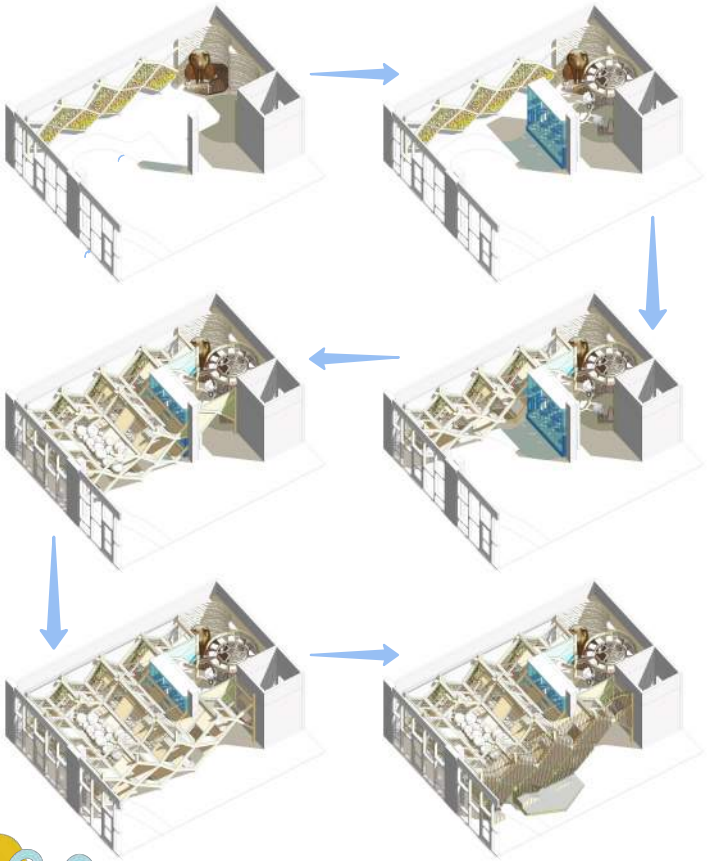


Request for Proposal: Wilderness Climber

Jackson Hole Children's Museum
105 Mercill Avenue



Request for Proposal: Wilderness Climber



Request for Proposal: Wilderness Climber - Steel Fabrication

Budget: \$xxx inclusive of materials, fabrication, & fees of entire Climber

Appx. Overall Size of Climber: 34' L x 16' D x ~12'-4" H

Key Concepts:

- Develop motor skills through body movement
- Exploratory

Components & Considerations:

- Primary structure
- Climber drawings are in Design Development by Skyhouse Studio. A Fabrication package will be made available to parties interesting in fabricating.
- Coordination across multiple trades is essential for successful completion of the Climber.



Drawings and images are shown for reference only and are not to scale.



Steel structure, clad in wood



Steel facade elements



Request for Proposal: Wilderness Climber - Woodwork

Budget: \$xxx inclusive of materials, fabrication, & fees of entire Climber

Appx. Overall Size of Climber: 34' L x 16' D x ~12'-4" H

Key Concepts:

- Develop motor skills through body movement
- Exploratory

Components & Considerations:

- Primary structure/Secondary
- Climber drawings are in Design Development by Skyhouse Studio. A Fabrication package will be made available to parties interested in fabricating.
- Coordination across multiple trades is essential for successful completion of the Climber.
- Is used as secondary structure to clad steel primary structure
- Explore through different modes of climbing, crawling, and hiding

Drawings and images are shown for reference only and are not to scale.



Wood facade



Steel structure, clad in wood



Request for Proposal: Wilderness Climber - Nets

Budget: \$xxx inclusive of materials, fabrication, & fees of entire Climber

Appx. Overall Size of Climber: 34' L x 16' D x ~12'-4" H

Key Concepts:

- Develop motor skills through body movement
- Exploratory

Components & Considerations:

- Climber drawings are in Design Development by Skyhouse Studio. A Fabrication package will be made available to parties interesting in fabricating.
- Coordination across multiple trades is essential for successful completion of the Climber.
- Explore through different modes of climbing, crawling, and hiding



Drawings and images are shown for reference only and are not to scale.



Climbing net



Request for Proposal: Wilderness Climber - Fiber Arts - Fox Den

Budget: \$xxx inclusive of materials, fabrication, & fees of entire Climber

Appx. Overall Size of Climber: 34' L x 16' D x ~12'-4" H

Key Concepts:

- Develop motor skills through body movement
- Exploratory
- Tactile
- Cozy / Comfy
- Relax
- Fox / Fox Den

Components & Considerations:

- Climber drawings are in Design Development by Skyhouse Studio. A Fabrication package will be made available to parties interesting in fabricating.
- Coordination across multiple trades is essential for successful completion of the Climber
- Fox / fox den for cozy seating

Please note that materials and forms are at artist's discretion. Drawings and images are shown for reference only and are not to scale.



Request for Proposal: Wilderness Climber - Fiber Arts - Furnishings

Budget: \$xxx inclusive of materials, fabrication, & fees of entire Climber

Appx. Overall Size of Climber: 34' L x 16' D x ~12'-4" H

Key Concepts:

- Develop motor skills through body movement
- Exploratory
- Tactile
- Cozy / Comfy
- Relax
- Osprey Nest / Eggs

Components & Considerations:

- Climber drawings are in Design Development by Skyhouse Studio. A Fabrication package will be made available to parties interesting in fabricating.
- Coordination across multiple trades is essential for successful completion of the Climber.
- Design for Osprey nest with eggs
- Create cozy and comfy spaces throughout the Climber



Please note that materials and forms are at artist's discretion. Drawings and images are shown for reference only and are not to scale.



Request for Proposal: Wilderness Climber - Trout Wall

Budget: \$xxx inclusive of materials, fabrication, & fees of entire Climber

Appx. Overall Size of Climber: 34' L x 16' D x ~12'-4" H

Key Concepts:

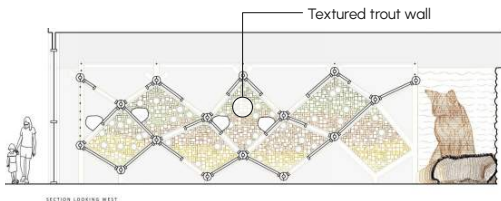
- Climb
- Explore
- Touch / Tactile / Texture
- Trout Scales / Anatomy

Components & Considerations:

- Climber drawings are in Design Development by Skyhouse Studio. A Fabri available to parties interesting in fabricating.
- Coordination across multiple trades is essential for successful completion of the Climber.
- Recycled / upcycled materials



Please note that materials and forms are at artist's discretion. Drawings and images are shown for reference only and are not to scale.



Request for Proposal: Wilderness Climber - Stalactite & Stalagmite Musical Instrument

Budget: \$xxx inclusive of materials, fabrication, & fees of entire Climber

Approximate overall size of Climber: 34' L x 16' D x ~12'-4" H

Key Concepts

- Touch
- Sound
- Exploration
- Surprises

Components & Considerations:

- Climber drawings are a Design Development by Skyhouse Studio. A Fabrication drawing is available to parties interested in fabricating.
- Coordination across all disciplines is essential for successful completion of the Climber.



Please note that materials and form are at artist's discretion. Drawings and images are shown for reference only and are not to scale.



CHARACTER SCALE



Request for Proposal: Lite Brite

Budget: \$xxx inclusive of materials, fabrication, & fees

Appx. Overall Size: 4' L x 6" D x 5' H

Key Concepts:

- Joyful
- Imaginative
- Storytelling
- Bright, both in color and in light

Components & Connections:

- Integrated storage for pegs
- Mobile, casters, etc.
- Needs outdoor access
- Electrical and data connections - current plans have connection at floor
- Relates to place and community and the vision of the Jackson Hole Children's Museum
- Inclusive and Adaptive

Please note that materials and forms are at artist's discretion. Images are shown for reference only.



Request for Proposal: Pretend Zones - Costumes

Budget: \$xxx inclusive of materials, fabrication, & fees

Appx. Overall Size: one-size fits all

Key Concepts:

- Celebrate Imagination
- Role-play
- Storytelling
- Relationships & Communication
- Jackson-related
- Humorous

Components & Considerations:

- Colorful
- located throughout the museum and themed to different areas
- Whimsy
- Related to Jackson animals, jobs, etc.

Please note that materials and forms are at artist's discretion. Images are shown for reference only.



Request for Proposal: Flexible Shop / Station

Budget: \$xxx inclusive of materials, fabrication, & fees

Appx. Overall Size: 6' L x 4' D x 6' H

Key Concepts:

- Welcoming
- Celebrating Immigration
- Role-playing
- Storytelling
- Relationships & Communication

Components & Consideration

- Flexible / Interchangeable
- Ice Cream Shop
- Hardware Store
- Grocery Store
- Ranger Station
- Integrated, interchangeable
- Unique storage
- Seating and tables
- Mobile, casters, etc.
- Could be designed in multiple pieces to house other objects
- Lighting
- Relates to place and community and the mission of the Jackson Hole Children's Museum
- Inclusive and Additive

Please note that materials and forms are at artist's discretion. Images are shown for reference only.



Request for Proposal: Mashup Motor

Budget: \$xxx inclusive of materials, fabrication, & fees

Appx. Overall Size: 7' L x 3'-6" D x 5' H

Key Concepts:

- Celebrate Imagination
- Role-playing
- Storytelling

Components & Considerations:

- Real components
- Mechanical manipulation
- Tactility and haptic feedback
- Push buttons, light up, flip switches
- Mobile, casters, etc.
- Relates to place and community and the vision of the Jackson Hole Children's Museum
- Inclusive and Additive
- Ideas:
 - Fuselage in jungle
 - Lichen

Please note that materials and forms are for artist's discretion. Images are shown for reference only.



Request for Proposal: Donor Recognition

Budget: \$xxx inclusive of materials, fabrication, & fees

Appx. Overall Size: TBD

Key Concepts:

- Sense of significance and recognition
- Community

Components & Considerations:

- Additive
- Integrative
- Lighting
- Relates to place and community and the vision of the Jackson Hole Children's Museum
- Whimsical, magical, imaginative, joyful

Potential Metaphors: school, fish, rocks / pebbles...

*Please note that materials and forms are at artist's discretion.
Images are shown for reference only and are not to scale.*

COMING SOON



Request for Proposal: Electrical Panel Design

Budget: \$xxx inclusive of materials, fabrication, & fees

Appx. Overall Size: TBD

Key Concepts:

Components & Considerations:

Potential Materials:

*Please note that material and forms are at artist's discretion.
Images are shown for reference only and are not to scale.*



COMING SOON



Request for Proposal: Background Mural at Office

Budget: \$xxx inclusive of materials, fabrication, & fees

Appx. Overall Size: appx. 36 x 12 feet

Key Concepts:

- Backdrop to Fantastic Forest

Components & Considerations:

- color palette
- related to Jackson

Potential Metaphors:

- aspen forest

Please note that materials and forms are at artist's discretion. Images are shown for reference only and are not to scale.

